

# SWINDON TOWN

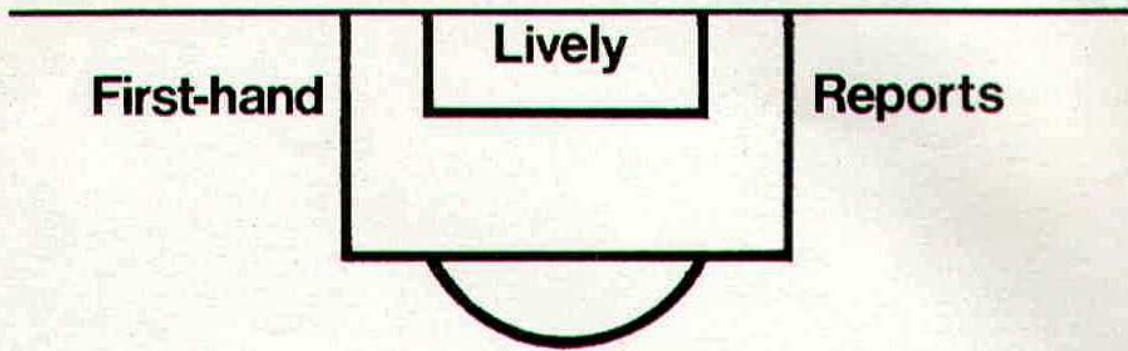
FOOTBALL CLUB

official programme

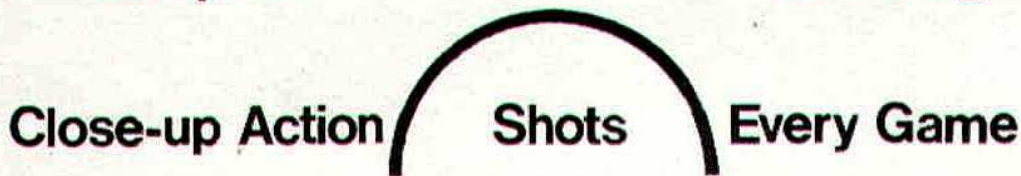


1/-





Complete Comprehensive Coverage



At home or away

**The Evening Advertiser**  
has it covered

---

---

# **M<sup>c</sup>ILROYS**

the Department Store  
with that something extra *Service!*

*Free*

DELIVERIES  
ESTIMATES ON CARPETS & CURTAINS  
CARPET FITTING

**WILLIAM McILROY (Swindon) LTD.**

**Tel. 5294**

---





# SWINDON TOWN FOOTBALL COMPANY LIMITED

Registered Office: COUNTY GROUND, SWINDON

**President:** Mr. W. J. CASTLE

**Vice-President:** Mr. J. DAVIES

**Directors:**

**Chairman:** Mr. H. E. LANE

**Vice-Chairman:** Mr. R. FRICKER

Messrs. F. L. COLLINGS, A. W. DONE, M. EARLE, C. J. GREEN, F. PLYER,  
H. WILLIAMS, K. H. WILMER and Dr. J. NICHOLAS

**General Manager:** Mr. R. A. MORSE

**Team Manager:** Mr. F. FORD

**SATURDAY, 21st FEBRUARY, 1970**

**F.A. Cup – Sixth Round**

## SWINDON TOWN v LEEDS UNITED

**Kick-off 3 p.m.**

SWINDON TOWN	LEEDS UNITED	OFFICIALS
1 Downsborough	1 Sprake	<b>REFEREE:</b> Mr. K. E. Walker (Maidstone)
2 Thomas	2 Reaney	
3 Trollope	3 Cooper	
4 Butler	4 Bremner	
5 Burrows	5 Charlton	
6 Harland	6 Hunter	
7 Smith	7 Lorimer	
8 Smart	8 Madeley	<b>LINESMEN:</b>
9 Horsfield	9 Jones	<b>Red Flag:</b> Mr. D. Turner (Rugeley)
10 Noble	10 Giles	<b>Yellow Flag:</b> Mr. D. R. Drewitt (Haywards Heath)
11 Rogers	11 Gray	
12 Jones	12 Clarke	
Colours: Red and White	Colours: White	



## *G. A. Streetly*

Tobacconist and Confectioner

10 BOURNE ROAD  
MOREDON SWINDON  
Telephone 4956

## **C. Goodenough and Sons**

Removal and Storage Contractors  
any distance

25 Cricklade Street Swindon  
Telephone 4555 and 3855

## **CECIL GREEN**

Artistic Decorations in all its branches

12 Armstrong Street  
Swindon Wilts  
Telephone 4593

## **W. J. SELWOOD**

Telephone Swindon 5884

### **Saddlery**

General Leather Goods Manufactured and  
Repaired to Your Individual Requirements

103 BROAD STREET  
SWINDON WILTSHIRE

## **Notton's Cafe**

COUNTY ROAD

200 yards from Ground

Perfect meals at all times

For High Class  
Central Heating, Plumbing  
Painting and Decorating  
Electrical Installations  
and Repairs

## **NORTH WILTS Sanitary and Heating Co. Ltd.**

NEWPORT STREET SWINDON  
Telephone 5373/4



THE ALCOHOL FUEL

### **COATE GARAGE**

REPAIRS - OVERHAULS - WELDING  
SERVICING - REBORING - TYRES

Props. E. V. & W. H. Mattick  
Marlborough Road Swindon

## **Leese, Ing & Co. Ltd.**

Mineral Water and  
Squash Manufacturers

LANSDOWN ROAD SWINDON  
Telephone 22744

## *Maylott Studios*

For Group and Sports Photographs  
Official Photographer to  
Swindon Town Football Club

31 Faringdon Road  
Telephone 22792

Always at your service

## *L. Bibby*

For all Types — Rags, Iron and Metal, etc.  
Spot Cash Paid. Please Telephone 2101  
and our van will call.

THE PADDOCK ERMIN STREET  
STRATTON ST. MARGARET



## news & views

I stated in the Bolton programme that it was the first meeting of the two clubs. This was quite incorrect, as Swindon played Bolton in season 1963-64. Bolton won at Swindon on Saturday, 14th November of that season, by three goals to 1. I am very grateful to all those supporters who wrote in pointing out the error.

Well, here we are in the Sixth Round of the F.A. Cup for the first time since 1924. Then we played at home one of the finest teams in the country at that time — Burnley. Their side was composed almost of international players with such great names as Jerry Dawson (goalkeeper), "Ginger" Hill, Bob Kelly, Tommy Boyle and George Waterfield. The result, a draw 1—1, but we lost the replay at Burnley on the following Wednesday. Older supporters will remember that game, as will some of our previous players still with us: Ted Nash (although Ossie Randall played in goal that day), Wally Dickinson (captain), Reg Cooper (who at present is very ill we are sorry to record), Bob Archer (very fit and hale and hearty), Bert Davies (still working for Swindon Town F.C.) and Granville Poppett (then a young lad in the Reserve team).

Burnley scored in the first half through their left-winger and Harold Fleming equalised ten minutes from the end of the game.

Now we face once again one of the greatest teams in the country, Leeds United. The last time we played them at the County Ground was a Division 2 game on 18th January, 1964. At the time Leeds were in first position in the League with the following record: played 26; won 15; drew 9; lost 2; goals for 43, against 19, points 39. Swindon occupied fifth place: played 26; won 11; drew 8; lost 7; goals for 39, against 30; points 30.

The game was very good and at one period Swindon held a two goal lead, but in the second half Leeds pulled one back, and equalised near the end of the game. Don Revie was a very relieved man, when the final whistle blew.

The teams were — Swindon: Turner; Dawson, Trollope; Morgan, McPherson, Woodruffe; Summerbee, Hunt, Smart, Atkins, Rogers. Leeds: Williamson; Reaney, Bell; Bremner, Madeley, Hunter; Giles, Weston, Lawson, Collins, Johanneson.

This weekend our Bank Manager, Mr. Linfield, retires from his post.

He is the best friend the Club has ever had. Swindon Town F.C. is in a happy position today, but many of us remember the dark days of the early fifties, when the Club was in serious financial difficulties. In fact it almost closed down. Mr. Linfield was a wonderful support, ready to do everything to help. He, more than anyone, saved Swindon Town F.C. from extinction. Matters improved, and we are on the crest of the wave, and Mr. Linfield leaves us, but I am sure this is the way he would want it.

Quiet, unassuming, working quietly in the background. Bright, cheerful, never critical, and always optimistic, Mr. Linfield is a real gentleman; one to whom we are most grateful. We owe him much. Thank you, sir!



# THE GREAT WESTERN HOTEL

(OPPOSITE SWINDON RAILWAY STATION)

The business man's hotel with a top class  
steak bar too!

Specialists in  
LUNCHEONS and DINNERS  
WEDDING PARTIES and RECEPTIONS  
good food — quick service

**J. ARKELL and SONS LIMITED Telephone SWINDON 22047**

## Mills and Merricks Limited

16-17 Bridge Street Swindon

Telephone 5365/6

**"HOME OR AWAY"**

our function is to ensure that your home is  
tastefully and economically furnished

SWINDON'S COMPLETE HOUSE FURNISHERS

### **New City Office Supplies Limited**

*Office and Stationery Suppliers  
to Industry and Commerce*

6 Commercial Road Swindon  
Telephone Swindon (STD Code 0793) 4605



## CLARK BROS. (Swindon) LTD

Building and Civil Engineering Contractors

CONSULT US FOR  
BUILDING AND CIVIL ENGINEERING  
CONSTRUCTION IN ALL ITS PHASES

**STRATTON ROAD**

**SWINDON**

Telephone Swindon 27261



## Supporters' Club Notes

Today's match with the renowned team of Leeds United will undoubtedly be one of the more memorable matches of Swindon Town's history, and particularly of the present season. Those supporters who saw the last two away matches against Leicester City and Sheffield United are amongst those who are confident that the lads can beat Leeds this afternoon. I am sure that all of us here today will see that vocal encouragement will not be lacking. Stan Harland has said, over and over, that the supporters' backing at home is of paramount importance in the overall success of the team. So keep cheering.

Let us also extend a courteous welcome to all the Leeds United supporters who have made the long trip to Swindon. They also have a team to be proud of, and will also be doing their utmost to encourage it. Let them leave Swindon this evening with pleasant memories of that welcome. We will meet again, one day.

When did another Mr. D. Rogers play for Swindon Town? Where did he come from? Where did he go to? Mr. Les Skiller played in goal for the Town in 1909. Where did he come from? When did he retire? The answers to these questions are to be found in the current Supporters' Club Handbook, in which is listed all the leading professionals from 1907 to 1947. Together with action photographs from last season's Football League Cup games.

### END OF SEASON SALE

**SUPPORTERS' CLUB HANDBOOK — 1969/70 SEASON**

remainder of stock at

**HALF-PRICE — 1/6 EACH**

Get your copy **TODAY** in the **CLUB KIOSK**  
at the **ENTRANCE TO THE SUPPORTERS' CLUB**

Many other collector's items at normal prices

## *Face in the crowd — is it you?*



In all future editions of this Season's programme we shall publish a photograph of a small section of the crowd at a previous match, one member of which will be clearly indicated by means of a circle. This person will be entitled to a free seat at the next match on producing the programme at the office.



WE AIM TO PLEASE — TRY US

# Tunleys

(1)

Glass (2)

Wallpaper (3)

Paint (4)

Polishes (5)

Artist Materials (6)

Prints (7) Ladders (8) Mirrors (9) Brushes (10) Aladdin Heaters (11)

MEMBERS OF THE



12/13 Gloucester Street Swindon Wiltshire



throughout the West

you will find Bradley Estates beautifully situated to meet the requirements of modern living. If you are thinking about a new home and would like to receive full details of our current and planned estates write now to 74 Victoria Road Swindon Wiltshire. Please send me details of

- Green Meadow Estate, Swindon, Wiltshire
- Nythe Estate, Swindon, Wiltshire
- Monkton Park Estate, Chippenham, Wiltshire
- Park Hill Estate, Frome, Somerset
- Damory Down Estate, Blandford Forum, Dorset
- Harkwood Farm Estate, Poole, Dorset
- Roman Way Estate, Bourton-on-the-Water, Gloucestershire

Name.....

Address.....



## BRADLEYESTATES



# our visitors



## LEEDS UNITED A.F.C. Pen Pictures Season 1969/70

### **BILLY BREMNER (Captain)**

Born Sterling. Joined the Club straight from school. Has won every honour Scottish football has to offer — Schoolboy, Under 23 and full International. Captained Scotland last season. Originally an inside-forward he was converted to wing-half. A brilliant and tireless player. Height 5ft. 4½ins. Weight 10st. 3½lbs.

### **MICHAEL BATES**

A Doncaster born inside-forward who has won Yorkshire Schoolboy representative honours and was an England trialist. Has played in many different positions, he is a strong well-built boy with extremely good ball control. Joined Leeds straight from school he now has Division 1 and European experience behind him. Height 5ft. 7ins. Weight 10st. 6½lbs.

### **RODERICK BELFITT**

Born in Doncaster, and signed from Retford Town. A big strong player, plays at centre-forward or inside-forward equally well. Made First Team appearances last season. Height 5ft. 11ins. Weight 12st.

### **JACK CHARLTON**

World Cup star, now known from the Andes to the Alps as "The Rock of England". He is Leeds' longest serving player and actually made his debut as long ago as April 1953 against Doncaster Rovers. Tremendous in defence and in attack, with his knowing ability has won many a match. Was in the England team in Mexico. Joined Leeds direct from school. Born Ashington, Northumberland. Height 6ft. 1½ins. Weight 12st 13lbs.

### **TERRY COOPER**

Castleford born, he joined Leeds in 1961. Previously with Wolverhampton juniors, starting as an outside-left where he performed with great success, but he has now settled down at left-back where he is now reckoned amongst the best in the country. Gained England International honours last season in the England team in Mexico. Height 5ft. 7½ins. Weight 11st. 5½lbs.

### **JOHN GILES**

Born Dublin. Joined Leeds from Manchester United, being one of the few players to have cost the Club a fee. A brilliant tactician with a great personality he took over the role of General when Bobby Collins was badly injured in Italy. A delicate unflappable ball player, always in the thick of the game. Has won many International honours for Eire. Height 5ft. 4ins. Weight 10st. 3lbs.

### **EDDIE GRAY**

Born Glasgow, and was wanted as a Schoolboy International by practically every club in England and Scotland. A regular first-teamer last season he gained Scottish Under 23 honours in 1967 and full International honours last season against England at Wembley. Has a temperament matching his ability. Height 5ft. 10½ins. Weight 11st 13lbs.

### **MICHAEL JONES**

Born Worksop. Signed from Sheffield United at a fee of £100,000. A strong, powerful lad, extraordinary good in the air, and plenty of skill on the ground. A full International. Height 5ft. 10ins. Weight 11st. 12lbs.



**DON ROGERS SPORTS**  
**29 FARINGDON ROAD SWINDON**

Telephone 27378

Main suppliers to Swindon Town Football Club

Stockists of

**All leading makes of Football Boots and Clothing**  
**Table Tennis, Badminton, Rugby and Hockey equipment**

**IN FACT THE COMPLETE SPORTS OUTFITTER**

**RIMES of SWINDON**

POPULAR EXCURSION TO

			Fare	
			adult	child
Saturday, February 28th	HULL CITY	Dept. 0630 hrs.	34/6	23/-

SERVICE DIRECT TO THE GROUND  
ALL SEATS NUMBERED AND RESERVED

Book now at

**102 Commercial Rd., Swindon**  
Telephone 27113

**46 Cricklade St., Cirencester**  
Telephone 3479

or with any of Rimes Booking Agents

*Dobell Shearman & Co. Ltd.*

**HIGH STREET SWINDON**

Telephone 4961

**FANCY and COMMERCIAL STATIONERS**  
**TYPEWRITERS and OFFICE EQUIPMENT**

Greetings Cards for all Occasions  
from Leading Art Publishers



**W. J. CASTLE**

**Office and Bakery**

**4 and 5 MARKET STREET**  
**SWINDON**

Telephone 22017

Specialists—

BIRTHDAY CAKES - WEDDING CAKES  
DAIRY CREAM - PASTRIES  
BUNS - ROLLS - SPONGES





## **OUR VISITORS (continued)**

### **TERRY HIBBITT**

Burst into Division 1 as a substitute against Nottingham Forest in season 1966/67 when he scored after being on the field only a few minutes. At present being played at outside-left because of his slight build, but should eventually become a very competent inside-forward. Was in the side that played so magnificently in beating Valencia in Spain in the Inter Cities Cup season 1967/68. A Bradford boy with a good temperament. Height 5ft. 6ins. Weight 9st. 11lbs.

### **NORMAN HUNTER**

Born Eighton-Banks, a stalwart in the defence and a member of Sir Alf Ramsey's World Cup squad. Owing to injury had to withdraw from the England trip to Mexico. Joining Leeds straight from school, he is a full International, and made his debut at Swansea. A quiet, unassuming personality, married at the commencement of this season, he is a tall and agile lad who never knows the word defeat. Height 6ft. Weight 12st. 12lbs.

### **DAVID HARVEY**

A local lad who has developed exceptionally well since joining Leeds direct from school, he proves the point that although Leeds search the four corners of Great Britain they do not forget boys on their own doorstep. Took Central League football in his stride and has already shown his ability in the First Team. Height 5ft. 11ins. Weight 11st. 11½lbs.

### **ALBERT JOHANNESON**

One of the fastest forwards in the game and the first coloured man ever to play in a Cup Final. He joined Leeds from Germiston Collieries, a Johannesburg side, when a fan offered to pay his fare out. Still cannot get used to English weather in mid-winter but it has never stopped him from keeping the fans warm with excitement with his runs down the wing, his trips down the centre and his happy goal-scoring knack. Height 5ft. 8ins. Weight 10st. 7lbs.

### **PETER LORIMER**

Scottish Schoolboy, Youth and Amateur International cap whom a great many judges say will one day go on to win full honours. Leeds' youngest player in League football, having made his debut against Southampton at Elland Road in 1962 at the age of 16. Has a terrifically hard shot and is not afraid of using it from outside the penalty area. Height 5ft. 9½ins. Weight 12st.

### **PAUL MADELEY**

A local player who joined Leeds from Farsley Celtic. Former England Youth International he gained full representative honours at the end of last season when he played in the England team in Canada. Is at home anywhere in the defence though he has appeared in most forward positions, and last season played in nine different field positions. Is a wholehearted player and one of those in whom Leeds place their trust for the future. Height 5ft. 11½ins. Weight 12st. 5½lbs.

### **PAUL REANEY**

Fulham born but went to Leeds as a baby and regards himself as a Yorkshireman. One of the best attacking backs in the game, but with a wise old head on his young shoulders, he never sacrifices defence on his trips upfield. England Under 23 honours, and last season gained full International cap substituting for Newton against Bulgaria. Before joining Leeds in October 1961, he had seen them play only twice in his life, because he was always playing himself. Height 5ft. 9ins. Weight 11st. 11lb.

### **GARY SPRAKE**

As big a favourite with Welshmen as leeks and daffodils, he is automatic choice as national goalkeeper. When he made his debut for Wales against Scotland in November 1963, he was only 18½ and was the youngest-ever International goalkeeper in the four home countries. Was flown to Southampton to make his League debut when Tommy Younger was suddenly taken ill and has rarely been out of the side since. Height 5ft. 11½ins. Weight 13st. 1½lbs.

### **ALLAN CLARKE**

Joined Walsall ground staff as a 15-year-old, signing professional at 17. Transferred to Fulham for £35,000 in March 1966, then to Leicester City in 1968 for £150,000. Leeds signed him in the close season on his return from Mexico with the England team. Height 6ft. 0½ins. Weight 10st. 10lbs.



# Division I I

## Fixture List

1969

### August

9 Blackburn Rovers	(A) 0—2
13 Cardiff City	(A) 2—2
16 Carlisle United	(H) 2—2
19 Cardiff City	(H) 2—1
23 Aston Villa	(A) 2—0
30 Charlton Athletic	(H) 5—0

### September

2 League Cup (2) Swansea	(A) 3—1
6 Blackpool	(A) 2—3
13 Oxford United	(H) 0—0
16 Middlesbrough	(A) 0—0
20 Queen's Park Rangers	(A) 0—2
24 League Cup (3) Oxford	(A) 0—1
27 Leicester City	(H) 1—1
30 Millwall	(H) 2—1

### October

4 Bolton Wanderers	(A) 1—0
7 Carlisle United	(A) 2—2
11 Sheffield United	(H) 2—1
18 Hull City	(H) 1—0
25 Portsmouth	(A) 1—3

### November

1 Norwich City	(H) 2—0
8 Birmingham City	(A) 0—2
15 Watford	(A) 0—0
22 Huddersfield Town	(H) 2—1
29 Preston North End	(A) 1—3

### December

6 Bristol City	(H) 1—1
13 Oxford United	(A) 0—0
20 Blackpool	(H) P
26 Aston Villa	(H) 1—1
27 Charlton Athletic	(A) 1—1

## 1970

### January

3 F.A. Cup Blackburn	4—0
10 Queen's Park Rangers	(H) 0—0
17 Leicester City	(A) 2—0
24 F.A. Cup (4) Chester	(H) 4—2
31 Bolton Wanderers	(H) 3—2

### February

7 F.A. Cup (5) Scunthorpe	(H) 3—1
9 Sheffield United	(A) 2—1
14 Blackburn Rovers	(H) P
21 F.A. Cup (6) Leeds	(H) .....
28 Hull City	(A) .....

### March

7 Huddersfield Town	(A) .....
14 Preston North End	(H) .....
21 Bristol City	(A) .....
28 Watford	(H) .....
30 Norwich City	(A) .....
31 Birmingham City	(H) .....

### April

4 Millwall	(A) .....
14 Middlesbrough	(H) .....

## Appearances

Name	Div. II	League	F.A.	Cup
		Cup	Cup	Winners Cup
Downsborough	30	2	3	2
Thomas	30	2	3	2
Trollope	30	2	3	2
Butler	30	2	3	2
Burrows	29	2	3	1
Harland	30	2	3	2
Smith	16(1)	2	3	2
Horsfield	29	2	3	2
Smart	30	2	3	2
Noble	27	2	2	2
Rogers	24	2	3	2
Jones	8 (5)		1	(1)
Blick	1 (4)			1
Heath	15 (1)			
Down	(1)			
Penman	1		(1)	

(Playing as substitute in brackets)

## Goalscorers

Name	Div. II	League	F.A.	Cup
		Cup	Cup	Winners Cup
Horsfield	13		4	3
Noble	9	3	1	1
Jones	4		1	1
Rogers	5		1	
Smith	2		1	
Burrows	1			
Trollope	2			
Thomas	1			
Smart	2		1	
Butler			1	
Opponents	1			



# League Table – Division II

(up to and including Tuesday, 17th February, 1970)

	P	W	D	L	F	A	P
Huddersfield Town	30	18	7	5	49	29	43
Queen's Park Rangers	32	16	6	10	55	40	38
Sheffield United	31	16	5	10	58	29	37
Cardiff City	31	14	9	8	49	32	37
Blackburn Rovers	30	16	5	9	41	34	37
<b>Swindon Town</b>	<b>30</b>	<b>12</b>	<b>12</b>	<b>6</b>	<b>40</b>	<b>32</b>	<b>36</b>
Blackpool	30	13	10	7	41	38	36
Middlesbrough	29	14	6	9	38	32	34
Carlisle	32	13	8	11	51	43	34
Leicester City	30	12	9	9	44	40	33
Bristol City	31	11	9	11	39	35	31
Portsmouth	32	10	8	14	50	60	28
Millwall	31	8	12	11	36	45	28
Bolton Wanderers	31	9	8	14	44	50	26
Birmingham City	30	9	8	13	41	50	26
Oxford United	29	8	10	11	22	29	26
Norwich City	30	11	4	15	29	39	26
Hull City	30	10	5	15	45	51	25
Watford	31	8	7	16	34	42	23
Charlton Athletic	30	5	13	12	27	54	23
Preston North End	29	7	8	14	30	40	22
Aston Villa	29	4	11	14	25	46	19

## Key of the Board

### First Section

A—Middlesbrough v. Manchester Utd.  
 B—Queen's Park Rangers v. Chelsea  
 C—Watford v. Liverpool  
 D—Burnley v. Nottingham Forest  
 E—Crystal Palace v. Sheffield Wed.  
 F—Derby County v. Arsenal  
 G—Everton v. Coventry  
 H—Sunderland v. West Ham  
 I—Tottenham v. Stoke City  
 J—Wolves v. Manchester City  
 K—Aston Villa v. Bristol City  
 L—Bolton Wanderers v. Blackpool  
 M—Cardiff City v. Birmingham City  
 N—Carlisle United v. Oxford United  
 O—Huddersfield v. Norwich City  
 P—Preston North End v. Hull City  
 Q—Bradford City v. Shrewsbury  
 R—Brighton v. Tranmere Rovers  
 S—Bristol Rovers v. Bournemouth  
 T—Mansfield Town v. Halifax Town

### Second Section

A—Orient v. Gillingham  
 B—Rochdale v. Southport  
 C—Rotherham v. Reading  
 D—Stockport County v. Doncaster R.  
 E—Torquay United v. Luton Town  
 F—Walsall v. Plymouth Argyle  
 G—Aldershot v. Peterborough United  
 H—Crewe A. v. Newport County  
 I—Grimsby Town v. Exeter City  
 J—Hartlepool U. v. Scunthorpe U.  
 K—Lincoln City v. Swansea Town  
 L—Notts County v. Wrexham  
 M—Southend U. v. Colchester U.  
 N—York City v. Oldham Athletic



## *Forthcoming Matches on This Ground*

**TUESDAY, 3rd MARCH, 1970**

**Division II**

**SWINDON TOWN v. PORTSMOUTH**

**Kick-off 7.30 p.m.**

**SATURDAY, 7th MARCH, 1970**

**Football Combination**

**SWINDON TOWN v. BIRMINGHAM CITY**

**Kick-off 3 p.m.**

**SATURDAY, 14th MARCH, 1970**

**Division II**

**SWINDON TOWN v. PRESTON NORTH END**

**Kick-off 3 p.m.**

**SATURDAY, 28th MARCH, 1970**

**Division II**

**SWINDON TOWN v. WATFORD**

**Kick-off 3 p.m.**

---

## **Swindon's Stalwart Defence**



**Stan Harland**



**Peter Downsborough**



**Frank Burrows**



**Rod Thomas**



**Joe Butler**



**John Trollope**



# The man in the middle



## KEITH WALKER

Today's referee is Keith Walker, of Maidstone. Keith's hobbies include judo, fishing and cricket. During the week he is a senior administration officer with the Kent Estates department.

He took up refereeing 23 years ago after breaking his leg when playing for Lancashire Combination club Lytham F.C. and he won his way to the Football League list in 1960.

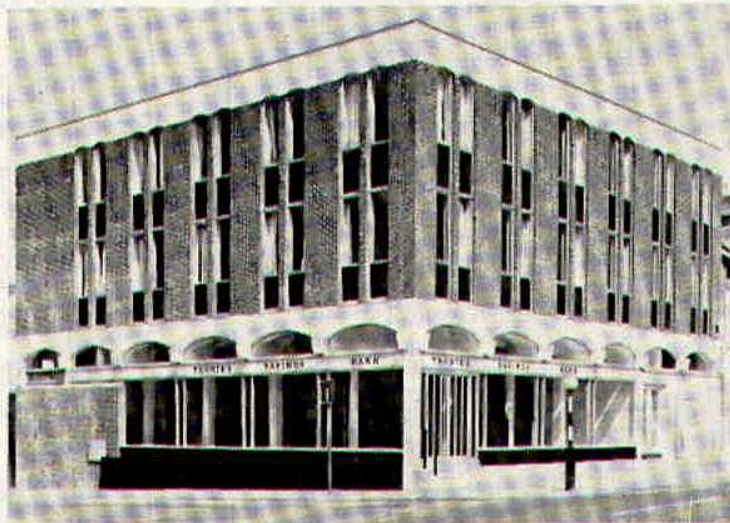
He considers ordinary League games every bit as important as big European competitive matches. "All games are important, whether on the local park or at the highest professional level", is his philosophy. And Keith has now refereed over 1,500 matches, some of them at the top professional level, including appointments in France, Spain, Portugal, Germany, Belgium, Iceland and Eire.

"Physical fitness is important, but positioning on the field is even more important for a referee," he says. "One does not have to be a greyhound to do a good job of control. Speed over short distances is necessary, but being in the right place at the right time is the most important part of refereeing — being able to read the game."

During his early refereeing days in Lancashire, Keith had to send off boxer Brian London. A few weeks later, following another incident, he sent off Brian's brother, Jack London!

**T** RUSTEE  
**S** AVINGS  
**B** ANK

93 Commercial Road  
Swindon



### Facilities include

- CURRENT ACCOUNT SERVICE
- 24 HOUR CASH DISPENSER
- T.S.B. UNIT TRUST
- CONTRACTUAL SAVINGS SCHEME  
(giving substantial Tax benefits)

**INTEREST 7% IN THE  
SPECIAL INVESTMENT DEPT.**



## Hatton's Newsagency

A. J. D. & N. J. Woodhouse

Newsagents :: Tobacconists  
Confectioners

Agents for Wessex School of Motoring  
Booking Agents for Rimes Coaches

6 REGENT CIRCUS (near G.P.O.)  
Telephone Swindon 22731

## BRETTS

PET and GARDEN SUPPLIES

32-33 Commercial Road  
and  
6 Cromwell Street Swindon

## THE PORK SHOP

(Swindon Bacon Curing Co. Ltd.)

Specialists in

**Bacon - Pork - Cooked Ham**

50 FLEET STREET SWINDON  
Telephone 22122

## J. WILMER

Coal Merchants

St. Margaret's Road Swindon

Telephone 22535

## SOUTHERN LAUNDRY CO. LTD.

Launderers and Dry Cleaners

HAYDON STREET SWINDON  
Telephone 4161

At Your Service

## A. E. LUDLOW LIMITED

Wholesale Fruit and Potato Merchant

COLBOURNE STREET  
SWINDON WILTSHIRE  
Telephone Swindon 3583

We deliver Fresh Fruit, Vegetables  
and Potatoes daily—Wholesale Only

FOR ALL YOUR ANGLING NEEDS  
CONSULT

## Frank Woodward

Swindon's Fishing Tackle Specialist

25 HAVELOCK STREET SWINDON  
Telephone 3879

For Paints of Good Quality

## H. S. Hodges & Sons

(SWINDON) LTD.

Cricklade Road Swindon

Telephone 22422

Dulux, Brolac, Valspar, Wallcharm, etc.

24 hour Delivery  
Service -

YOUR COMPLETE JANITORIAL SERVICE

## Wilts Cleaning Supply Service

Kembrey Warehouse Rear 255 Cricklade Road  
SWINDON

Telephone 21012

Represented by G. ALEXANDER

Telephone Swindon 27833





**LEEDS UNITED**

**Back Row:** (Manager)  
Don Revie

Paul Reaney  
Norman Hunter  
Roderick Belfitt  
Eddie Gray

**Middle Row:**  
Mike O'Grady  
(now with Wolves)  
Jack Charlton  
Gary Sprake  
David Harvey  
Michael Jones  
Paul Madeley

**Front Row:**  
Allan Clarke  
Terry Cooper  
Michael Bates  
Billy Bremner  
John Gilles  
Peter Lorimer

Photo by courtesy of Wiltshire Newspapers.



## HARRY LUNN

(Ex NOTTS COUNTY, PORTSMOUTH and SWINDON TOWN F.C.)

**Fish Bar and Restaurant**  
**27-28 COMMERCIAL ROAD SWINDON**

RESTAURANT open 9 a.m. to 10 p.m. for

**Snacks - Lunches - High Teas - Evening Meal**

FISH BAR open Mid-day and Evenings until 11 p.m.

## HULFORD MOTORS LIMITED

**SELF DRIVE HIRE**

Fleet of 1969/8 Fords      Escorts De-Luxe  
Cortinas De-Luxe      Cortinas 1600 Estate  
(Bench Seat Column Change) — Zephyr V4s

**SHRIVENHAM ROAD**

(200 yards from Football Ground)

**Telephone 4934**

Large Car Park Available

## COWLEY BROS. (Wroughton) LTD.

BUILDERS OF MODERN ATTRACTIVE  
HOUSES and BUNGALOWS

Developments at

**SWINDON**

**WROUGHTON**

**BADBURY**

Office

**28 NEWPORT STREET**  
**SWINDON**

Telephone Swindon 6870

Reserved for British Rail



**Inter-City**





## Going by Car?

### HULL CITY

Saturday, 28th February, 1970

#### SWINDON to HULL . . .

Leave Swindon by the A361 via Highworth, Burford and Chipping Norton to **Banbury**. **44 miles**

Take the A423 from Banbury, continue to  $\frac{3}{4}$  mile after Southam to the junction with the B4100, turn right and follow the A426 for Rugby. Leaving by the Newbold Road to Gibbet Hill Roundabout, cross the A5 to the A4114, turn right for the **M1 Motorway**. **76½ miles**

Follow the M1 until after the Woodall Service area until reaching **Intersection M18**. **147¾ miles**

Follow signs "North Doncaster M18" until Intersection (1) then take the A631 for Maltby. After 4 miles keep left for the A60, then  $\frac{1}{2}$  mile further turn left for the A631, Tickhill, then turn right onto the A614 at Bawtry. Continue to Finningley turn left then right onto the A18 and  $6\frac{1}{2}$  miles on turn right onto the **A614**. **175½ miles**

Follow A614 via Thorne and Goole to Howden and at junction take the A63. Continue along the A63 right into Boothferry Road for **Boothferry Park, HULL**. **214 miles**

### HUDDERSFIELD TOWN

Saturday, 7th March, 1970

#### SWINDON to HUDDERSFIELD . . .

Leave Swindon by the A361 via Highworth, Burford and Chipping Norton to **Banbury**. **44 miles**

Take the A423 from Banbury, continue to  $\frac{3}{4}$  mile after Southam to the junction with the B4100, turn right and follow the A426 for Rugby. Leaving by the Newbold Road to Gibbet Hill Roundabout, cross the A5 to the A4114, turn right for the **M1 Motorway**. **76½ miles**

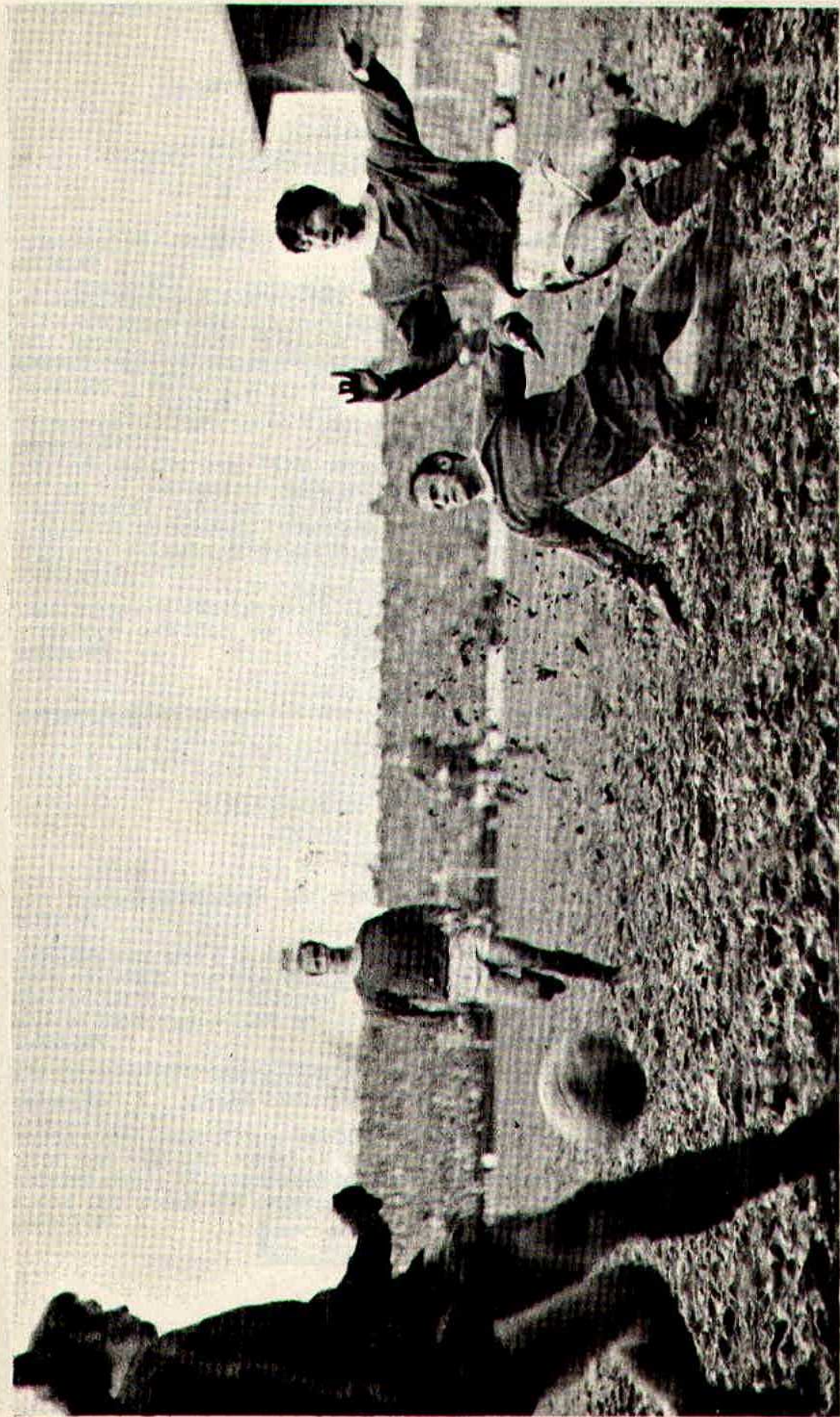
Follow the M1 Motorway until Intersection (38) and join the A637 and follow signs "**Huddersfield A637**". **169¼ miles**

Continue via West Bretton, Midgley and Flockton until junction with the A642, then turn left to Lepton and take the A629. Keep right for Greenside and Moldgreen. At  $\frac{1}{2}$  mile on turn right into St. Andrew's Road, then right again into Leeds Road, **Huddersfield**. **180¾ miles**



Route kindly supplied by the R.A.C.





Arthur Horsfield ploughs through the mud to get Swindon's second goal against Scunthorpe.

Photo by R. Marsh



Suppliers to the Swindon Team  
**MAY WE SUPPLY YOU?**



**EARLE**

of Chippenham Limited

MAIN

**FORD**

DEALERS

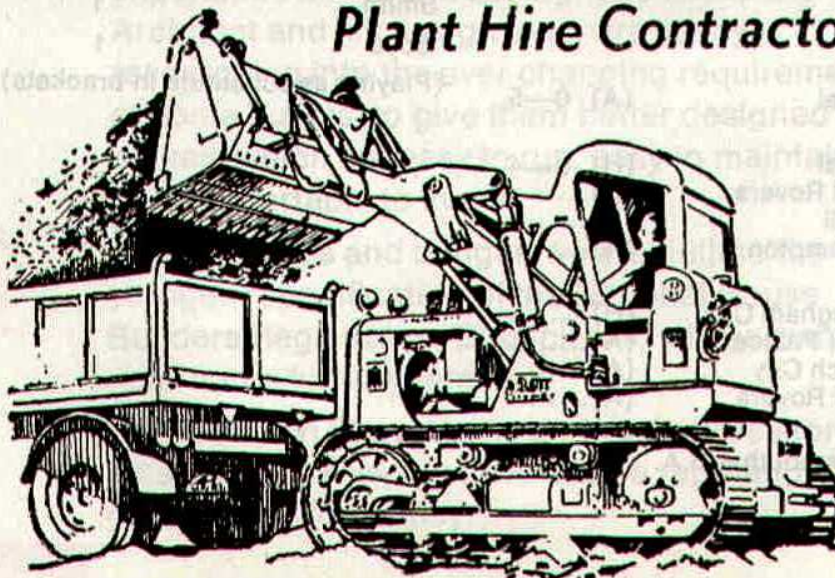
**COCKLEBURY ROAD CHIPPENHAM**

Telephone 3255

**H. HIBBERD LIMITED**

**FOR YOUR EARTH-MOVING EQUIPMENT**

*Plant Hire Contractors*



**40 NEWPORT STREET SWINDON**

Telephone Swindon 6125



# Football Combination

## Fixture List

### 1969

#### August

9 Southampton	(H) 2—2
16 Swansea Town	(A) 0—1
23 Queen's Park Rangers	(H) 1—4

#### September

4 Oxford United	(A) 2—0
6 Bristol City	(H) 1—2
17 Cardiff City	(A) 3—2
20 Arsenal	(H) 1—2
27 Luton Town	(A) 0—2

#### October

4 Reading	(H) 1—2
7 Bristol Rovers	(A) P
11 Ipswich Town	(A) 1—0
21 Bristol City	(A) 2—7
25 Crystal Palace	(H) 1—0

#### November

8 Plymouth Argyle	(H) 3—1
15 Crystal Palace	(H) 1—2
22 Swansea Town	(A) 1—1
29 Tottenham Hotspur	(H) 1—4

#### December

8 Peterborough United	(A) 0—2
13 Leicester City	(H) 0—2
17 Plymouth Argyle	(A) 1—1
20 West Ham United	(A) 3—1
27 Swansea Town	(H) 0—2

### 1970

#### January

27 Arsenal	(A) 0—5
------------	---------

#### February

3 Arsenal	(H) 0—4
10 Bristol Rovers	(H) .....
17 Walsall	(A) .....
24 Northampton	(A) .....

#### March

7 Birmingham City	(H) .....
11 Crystal Palace	(A) .....
18 Norwich City	(A) .....
21 Bristol Rovers	(A) .....

#### April

4 Bournemouth & B.A.	(H) .....
----------------------	-----------

Name	Appearances		Goalscorers	
	Foot. Comb.	Foot. Comb. Cup	Foot. Comb.	Foot. Comb. Cup
Price	1			
Dawson	7	5		
Fry	14	5		
Desmeules	9	4		
Blick	16	6		
Handrick	16	7	1	
Heath	4	2		
Penman	11	3	1	
Down	13	5	6	
Dangerfield	14 (1)	6	10	1
Moss	4	1		1
Bailey	11 (2)	6	1	
Grzadowski	2			
Hubbard	15	5		
Jones (R)	11	5		
Allen (K)	8	3		
Jones (C)	4	2		
Wetson	1	1		1
Claypole	10	3		
Porter	2	4	1	1
Allen K. R.	2	2		
Smith		1		1
Boyd		1		

(Playing as substitute in brackets)



---

# AKERS GARAGE LIMITED

THE STREET MOREDON SWINDON WILTSHIRE

Telephone Swindon 3457/8

main dealer for  
**VAUXHALL/BEDFORD**  
and  
**Parts and Accessories**  
**Sales and Service**

Showrooms open  
MONDAY to FRIDAY — 8 a.m. to 8 p.m.  
SATURDAY — Closed 7 p.m.  
SUNDAYS — 10 a.m. to 2 p.m. for Petrol and Viewing

---

---



MODERN LIVING IN EXPERIENCED HANDS

Wilson homes are the result of over 60 years experience in house building. The Company Architect and his design team are always researching into the ever changing requirements of home buyers, to give them better designed homes, which are easy to run, easy to maintain and comfortable to live in.



All our houses and bungalows are built to the stringent specification of the National House Builders Registration Council who will guarantee your home for 10 years.

Visit a Wilson Show Home and you will see for yourself why Wilson's have such a reputation in giving value for money.

**WILSON**

(Swindon) LTD., 90-92 Commercial Road, Swindon Telephone 6361 (3 lines)

---



## seating manufacturers for Stadium Seats Ltd

- \* Heavy, medium and light steel fabrication
- \* Custom made production line equipment
- \* Ancillary work for industry and the building trade

FAST EFFICIENT SERVICE BY



**MARTYN LYNSHAW LTD**

BOUNDARY WORKS · STRATTON ROAD · SWINDON · WILTS

Telephone 21844

## spectator seating in high density polyethylene

- \* Supplied to over 36 Football League clubs
- \* Any colour. No maintenance
- \* Industrial seats for the food, electronics and pharmaceutical industries
- \* Largest supplier of spectator and industrial seating in Europe

**STADIUM SEATS LTD**

STRATTON ROAD · SWINDON · WILTS Telephone 21844